

*Sheroes 2009*



*Sheroes 2009*



*Presented by  
Region 10 Education  
Service Center  
&  
The Junior League of  
Richardson*



*Sheroes 2009*



*In Memoriam  
Sarah Holwerda  
2007 Shero*

.



Sarah will remain in our hearts even though her life ended in 2008. Sarah fought hard with chronic disease and the loss of her mother to become a successful businesswoman.



We mourn her loss, but her legacy as a Shero remains through her story to other struggling young women.



# *Our 2009 Sheroes*

*Sherene Abraham*

*Alice Ausbon*

*Maria Banda*

*Sylvia Baylor*

*Ruby Bowie*

*Patricia Kempstead*

*Jennifer Hobson-Benton*

*Beatris Martinez*

*Elizabeth Moffitt*

*Carol Nelson*

*Maria Rodriguez*

*Danna Ross*

*Cheryl Rucker*

*Tracie Yvonne Spears*

*Tamika Stevenson*

*Yvonne Valdez*

*Kelly Vernon*



# *Sherene Abraham*

## *Paying it forward*



### *Then*

*Sherene lived in a home of violent abuse and struggled to find a way out.*

### *Now*

*Sherene draws on her life experiences in her work as a community educator for a local domestic violence center.*

# *Alice Ausbon*

## *Transcending physical limitations*

### *Then*

*Alice found herself crippled by the pain of chronic arthritis.*



### *Now*

*Having healed mind, body, and soul, Alice is a successful trainer and consultant.*



# *María Banda*

## *Following her dreams*



### *Then*

*María was a young mother struggling to keep her family secure.*

### *Now*

*María has built a loving family and fulfilled her own dreams of becoming an educator as well.*

# *Sylvia Baylor*

## *Empowering the Communitys*



### *Then*

*Sylvia and her children survived by living in hotels, rooming with relatives and sleeping in their car.*

### *Now*

*Sylvia is a respected educator and activist striving to improve the lives of low-income families.*

# *Ruby Bowie*

## *Embracing change*



### *Then*

*Ruby's drug addiction led her in and out of jails and institutions.*

### *Now*

*Ruby is a Ph.D. candidate and a community activist who advocates for others who struggle to meet life's challenges*

# *Patricia Hempstead*

*Always doing her best*



## *Then*

*Music served as Patricia's refuge from challenges in the home and at school.*

## *Now*

*Patricia is a school administrator who ensures that all of her students feel safe, secure and accepted.*



# *Jennifer Hobson-Benton*

## *Striving to be her best*

### *Then*



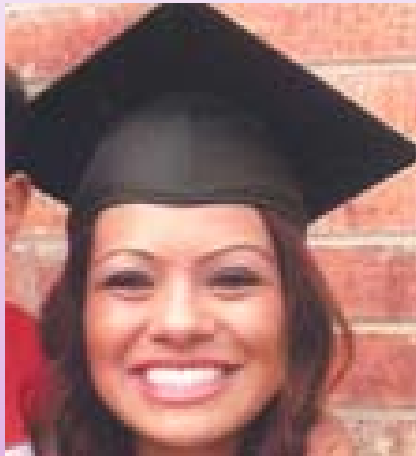
*Despite numerous accolades and honors, pregnancy and an abusive relationship almost derailed Jennifer's dream of completing college.*

### *Now*

*Jennifer's children have motivated her to become a successful educator and a business owner.*

# *Beatris Martinez*

*The choice is yours*



## *Then*

*Beatris sacrificed playtime to assist her immigrant family as they reached for the American dream.*

## *Now*

*Beatris continues to serve others as a school administrator and mentor for at-risk girls.*

# *Elizabeth Moffitt*

## *Daring to begin again*



*Then*

*Elizabeth's business endeavors resulted in financial ruin and severed relationships.*

*Now*

*She is a successful business woman who shares her hard earned wisdom with ambitious young women.*

# *Carol Nelson*

## *Nothing is impossible*



### *Then*

*Carol was a pregnant teen who struggled to overcome ridicule and follow her dreams.*

### *Now*

*Carol is an educator who draws on her experiences to mentor and support teen mothers.*

# *María Rodríguez*

## *Persevering beyond obstacles*



*Then*

*María faced the pain of divorce and separation from her young daughter.*

*Now*

*María and her daughter have reunited. They now band together to face whatever challenges come their way.*

# *Danna Ross*

## *Following her dreams*



### *Then*

*Danna was a rebellious teen who almost let “big city life” intercept her dreams*

### *Now*

*After working her way through college, Danna teaches Spanish and mentors at-risk students.*

# *Cheryl Rucker*

## *Moving beyond grief*



*Then*

*Cheryl's daughter was slain at the hands of an abusive ex-boyfriend.*

*Now*

*Cheryl is an activist who speaks to teen girls on the importance of "dating healthy."*



# *Tracie Yvonne Spears*

*From rebellious teenager to counselor*



*Then*

*Tracie dropped out of school and found herself pregnant with no guidance or support.*

*Now*

*Tracie is a school counselor who uses her success to inspire others.*

# *Tamika Stevenson*

*Exceeding her own expectations*



*Then*

*Tamika wanted to move beyond her turbulent neighborhood and experience success.*

*Now*

*Having been honored as a Dean's Distinguished Graduate at UT, Tamika is a teacher and a role model to others.*

# *Yvonne Valdez*

## *Reaching out with open arms*



### *Then*

*As a young woman, Yvonne suffered the tragic loss of six infants and the end of her marriage.*

### *Now*

*Yvonne finds strength in others as a mentor to families who have also lost young children.*

# *Kelly Vernon*

## *Always look to the future*



### *Then*

*Injuries suffered in a car wreck caused Kelly to give up a promising future as an actress.*

### *Now*

*Kelly has a new passion as a special education teacher who works with children who face physical challenges and learning difficulties.*

# Our 2009 Sheroes

Sherene Abraham

Alice Ausbon

Maria Banda

Sylvia Baylor

Ruby Bowie

Patricia Kempstead

Jennifer Hobson-Benton

Beatris Martinez

Elizabeth Moffitt

Carol Nelson

Maria Rodriguez

Danna Ross

Cheryl Rucker

Tracie Yvonne Spears

Tamika Stevenson

Yvonne Valdez

Kelly Vernon

