

EMPOWER DATA WAREHOUSE TRAINING

EMPOWER Website Contents Some things to see before you log in

The Resources Page

- [About Empower](#)
- [Features](#)
- [What's New](#)
- [Training](#)
- [Resources](#)
- [EMPOWER Forum](#)
- [Member Login](#)



Resources

- [Using Excel with EMPOWER](#)
- [Data Informed Leadership](#)
- [Resources for Ethics](#)
- [Understanding How Principals Use Data](#)
- [Dataguides](#)
- [Federal Data Quality](#)
- [Quality Data](#)

The bottom three resources listed are from the National Forum on Education Statistics – a division of the US Department of Education. Data quality – both data accuracy and usefulness – are key to the success of the warehouse. The warehouse will only be as good as the data that goes into it. The full names of the last two links are:

- *Forum Guide to Building a Culture of Data Quality*
- *Forum Curriculum for Improving Education Data*

Resources will be added and refreshed over time. If you have some strong resources please let the EMPOWER team know about them.

The Training Page

The training page has two parts. The first part is a series of podcasts created by Region 10 the discuss data and data quality. Though we refer to EMPOWER in these podcasts, the information is about the general use of data in education. The second area contains mostly resources for the people who have attended Report Writing class. These resources will be of little use for the general user. However this handout is among those resources.

[About Empower](#)
[Features](#)
[What's New](#)
[Training](#)
[Resources](#)
[EMPOWER Forum](#)
[Member Login](#)



Training

[Data 101 - Introduction and Overview \(Podcast\)](#)

[Data 201 - Data Quality and Types \(Podcast\)](#)

[Data 301- Data for Administrators \(Podcast\)](#)

Report Writer Resources

Getting Started – If you want to run reports directly into Excel

Adding Excel to the Browser Settings

The settings below are necessary in order to run Excel spreadsheets within the Empower Data Warehouse.

- Load Internet Explorer
- Click Tools
- Click Internet Options
- Click Security Tab
- Click Trusted Sites (Green Check Mark)
- Click Sites button

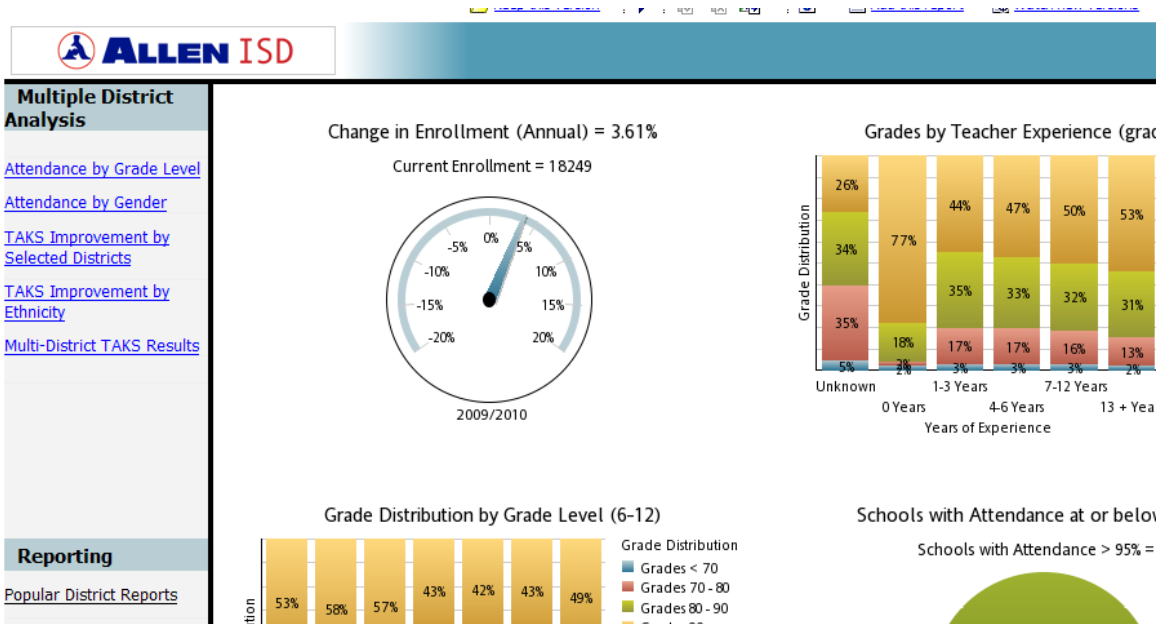


- Type the following URL into the empty box
- <https://empower.region10.org/>
- Click Add
- Set the Security Option to low for this trusted site
- Click Close
- Click OK

EMPOWER Data Warehouse Using the warehouse

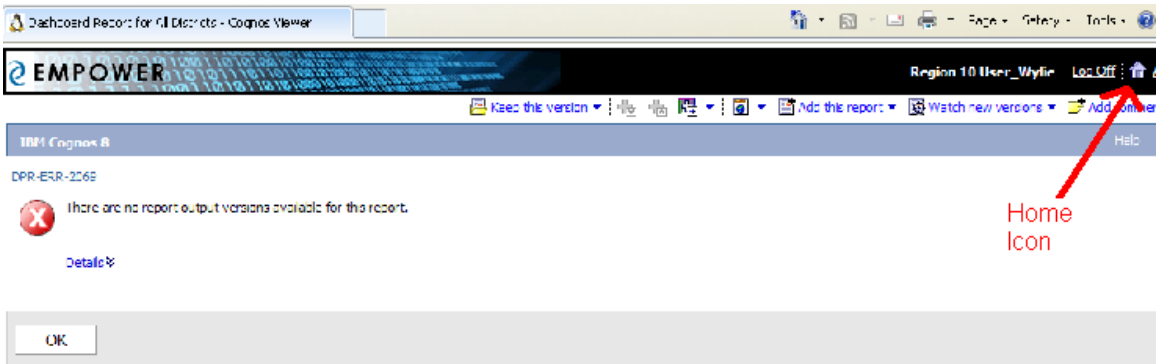
1. Login into the **Empower Data Warehouse** at <https://empower.region10.org>

Most users will connect to the dashboard – this dashboard updates on a weekly basis.



The dashboard provides navigation to the most common reports as well as a quick overview of the district.

If your logon was created after the last burst run (usually every Sunday night) you will not see a dashboard – instead you will see the following page – You want to click on the home button



Click on the home icon to go to the main folders page

2. The main folder page – Click on the second folder - EMPOWER Reports

First User [Log Off](#)

[Public Folders](#) [My Folders](#) [Principal Page](#)

Public Folders

- [District Reports](#)
- [EMPOWER Reports](#)
- [R.10 Training](#)
- [Dashboard Reports](#)
- [Admin Folder](#)
- [Attendance Cube](#)

Public Folders - Cognos Connection - Windows Internet Explorer

https://empower.region10.org/cognos8/cgi-bin/cognos.cgi?b... Live Search

File Edit View Favorites Tools Help

https://events.ednet10... Public Folders - Cogn... x

Cognos Connection

Region 10 master user [Log Off](#)

[Public Folders](#) [My Folders](#)

Public Folders > EMPS Reports

Entries: 1 - 8

<input type="checkbox"/>	Name	Modified	Actions
<input type="checkbox"/>	Student Performance	April 15, 2008 7:51:23 AM	More...
<input type="checkbox"/>	Standard Tests	April 15, 2008 8:01:31 AM	More...
<input type="checkbox"/>	Student Profile	April 15, 2008 8:40:36 AM	More...
<input type="checkbox"/>	Special Populations	February 19, 2008 1:41:54 PM	More...
<input type="checkbox"/>	Discipline	April 15, 2008 9:07:52 AM	More...
<input type="checkbox"/>	Attendance	April 15, 2008 9:26:34 AM	More...
<input type="checkbox"/>	Schedules	April 15, 2008 9:31:24 AM	More...
<input type="checkbox"/>	Finance	April 15, 2008 9:31:32 AM	More...

Internet 100%

3. Click on the **Attendance** folder

- You will see the list of reports built into the system
- Click on any report
- Click the drop down boxes
- As the years progress, additional years will be added and longitudinal data will be available for these reports
- Browse through the reports to see which ones are most helpful to you.
- Click on the EMPOWER Reports link under the Public Folders tab.

4. Click on the **Student Performance** folder

- Click on **TAKS** folder
-



<input type="checkbox"/>	Name ↕
<input type="checkbox"/>	Performance Factor Analysis
<input type="checkbox"/>	TAKS
<input type="checkbox"/>	Graduation Over Time
<input type="checkbox"/>	TAKS Performance by Course for a Teacher
<input type="checkbox"/>	TAKS Performance by Teacher for a Course

- Click on the TAKS Level Frequency by Campus report

<input type="checkbox"/>	Name ↕	Modified ↕
<input type="checkbox"/>	TAKS Level Frequency by Campus	September 16, 2009 10:1
<input type="checkbox"/>	TAKS Level Frequency by Campus Counts	August 27, 2009 8:33:27
<input type="checkbox"/>	TAKS Level Frequency by Grade Level	August 27, 2009 8:33:38
<input type="checkbox"/>	TAKS Level Frequency by Grade Level Counts	August 27, 2009 8:33:55
<input type="checkbox"/>	TAKS Level Frequency by School Type	August 27, 2009 8:33:47
<input type="checkbox"/>	TAKS Level Frequency by School Type Counts	August 27, 2009 8:34:04

- Select a TAKS test
- Select a School Type in the drop down box
- Select the TAKS test Year in the drop down box

Scroll down (underneath the graph)

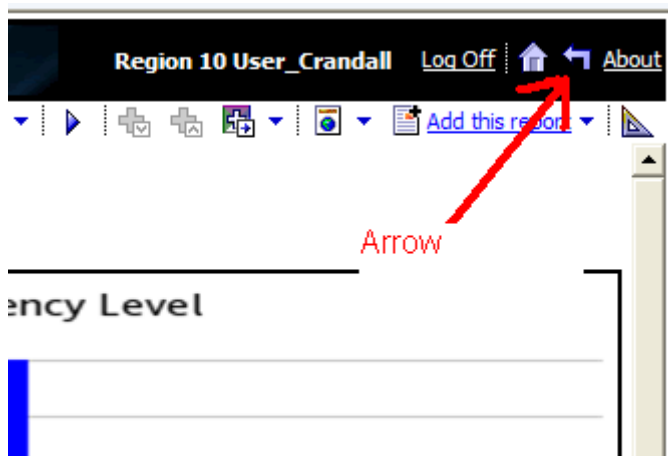
- Click on a School
- Click on a Grade level
- Individual Child
- Test date
- Item Objective detail
- Click on Student ID to go to other reports

5. You now have several Windows open – we want to return to a report with the home icon

- If you click too fast and close all the windows, you must logon again

Note: Find the House and an Arrow in upper right hand corner

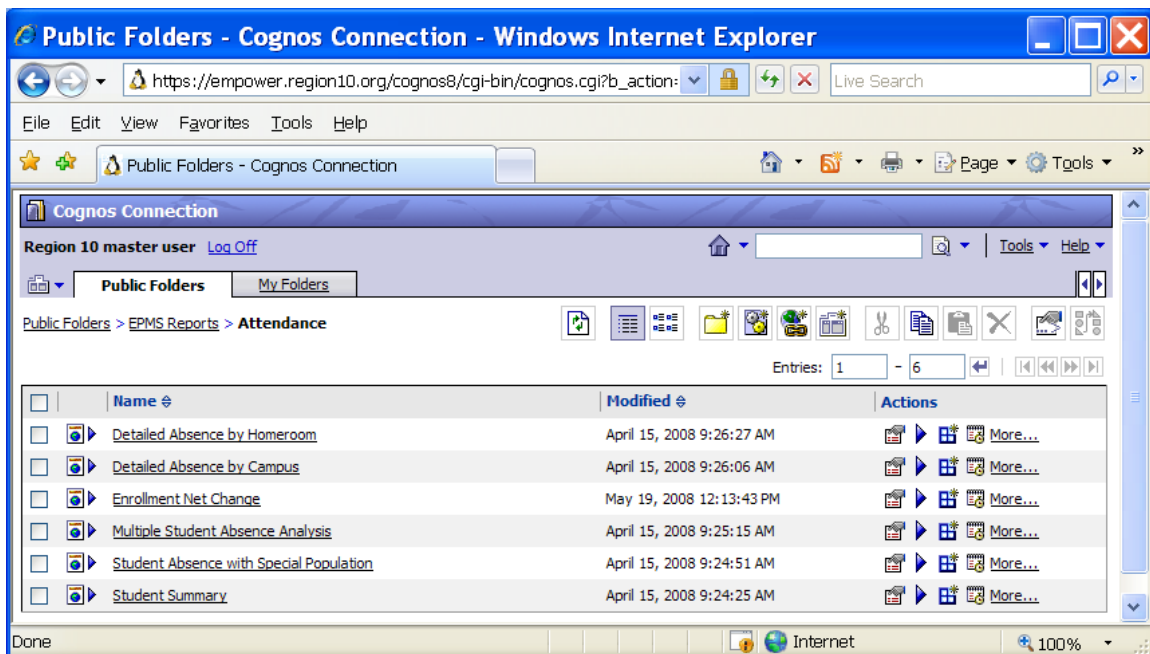
The *House* takes you home, the *Arrow* takes you back one level and to the report list.



Remember

- The Cognos House takes you home within the Data Warehouse (no chimney)
- The Internet Explorer House (with chimney) takes you to your IE homepage

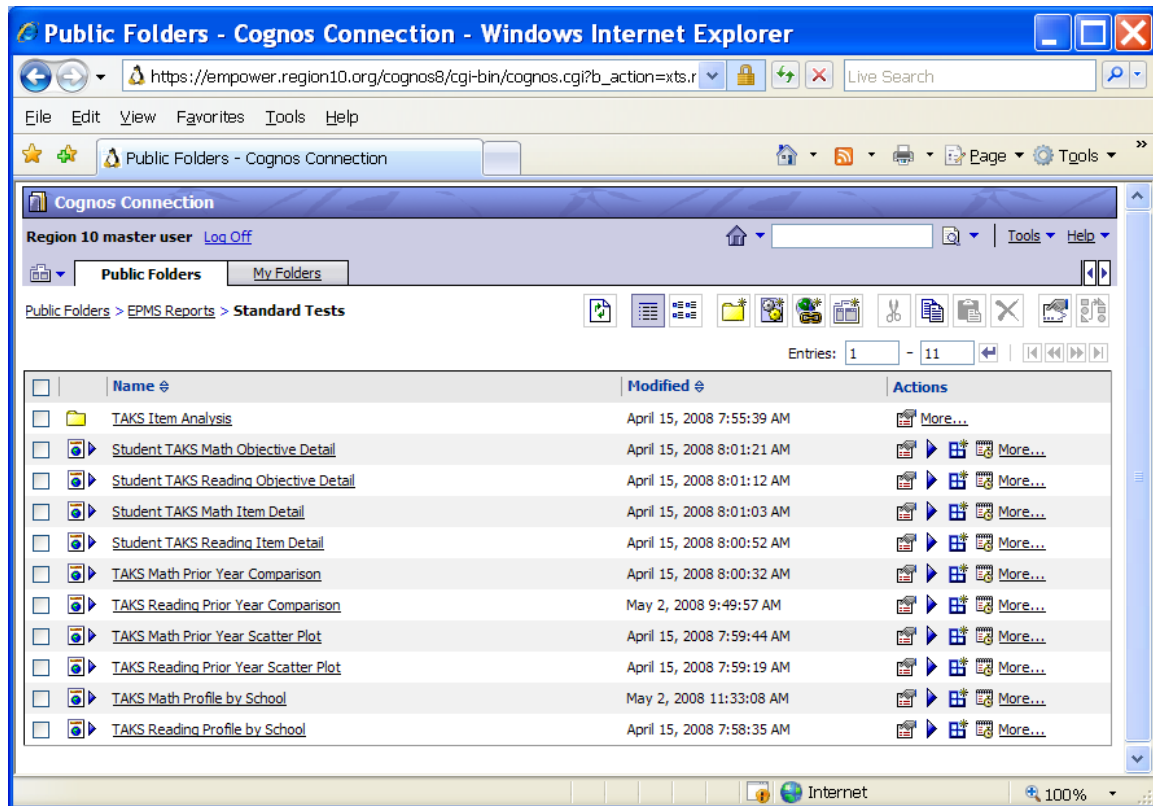
6. Click on the **Attendance** folder



- Click the Enrollment Net Change Report
- Click on the snapshot date October 31, 2008
- Click a snapshot October 30, 2009

- Do not choose a Saturday or Sunday date.
- Do not click the week of Spring break.
- If school is not in session the system will return “0” enrolled students.
- Can save the report to a spreadsheet to add totals or calculate values
- Click the Home icon

8. Click the **Standard Tests** folder



9. Click the **TAKS Item Analysis** folder

- Click on the Campus Item Analysis report
- Select the Date, Grade Level, and Version (language E or S) from the drop down boxes.
- Click Finish
- Click the arrow to go back to Standard Tests when you are finished
- Explore another TAKS report
- Click the Home icon

10. Click on EMPOWER Reports

- Explore the reports of your choice

11. Click on the Analysis Studio Icon

- Choose the Attendance Cube
- Choose Blank Analysis
- Choose All Districts
- Click on the All Locations plus sign and Ctrl Click your district and a neighboring district and drag to rows
- Click on the All Dates Plus Sign and 2009

- Choose Sept and drag to columns
- Click on measures and choose % Absent
- Drag % Absent to the measures area

The screenshot shows the Analysis Studio interface. On the left is the 'Insertable Objects' pane with a tree view for 'Attendance Cube' containing 'All Dates' (2007-2009, Jan-Jun 2009) and 'All Locations' (Allen ISD, Wylie ISD, Lovejoy ISD, Highland Park ISD, Irving ISD, Midlothian ISD, Maypearl ISD, Leonard ISD, Denison ISD). The main area shows a pivot table with 'All Locations (...)' in the Rows field and 'Mar, 2009' in the Columns field. The table displays the percentage of absent students for three weeks in March 2009 across various ISDs.

% Absent	Week of 1 Mar, 09	Week of 8 Mar, 09	Week of 22 Mar, 09
Maypearl ISD	3.138%	4.260%	
Leonard ISD	2.573%	2.326%	
Total	2.882%	3.489%	2.882%

Analysis Studio Drop Zones

The diagram illustrates the 'Drop Zones' and 'Selector Bars' in Analysis Studio. A box labeled 'Drop Zones' has red arrows pointing to four areas: 'Measure', 'Columns', 'Rows', and 'Measure'. A text box above the diagram says 'Drag & drop insertable objects to populate the following dropzones:'. Below the diagram is a table with 'Count of Discipline Events' in the first column and years (2000-2004) and 'All Dates' in the last column. The 'Count of Discipline Events' header is highlighted with a red box.

Count of Discipline Events	2000	2001	2002	2003	2004	All Dates
Northwest Learning Community	169	248	459	329	1,261	2,587
Prairie Plns Lrn Community	174	704	1,131	940	858	3,813
Mountain Learning Community	102	154	162	265	1,088	1,772
Southpoint Learning Community	272	395	383	436	334	1,872
All Locations	718	1,507	2,137	1,972	3,541	10,055