

Foster Care and the Adolescent Brain

Join Region 10 as we partner with Timberlawn Mental Health System to learn about the most current research concerning foster care and the adolescent brain, including common medications and strategies for school liaisons.

Questions?
Contact David Ray - (Region 10 Consultant)
David.Ray@Region10.org; 972.348.1786

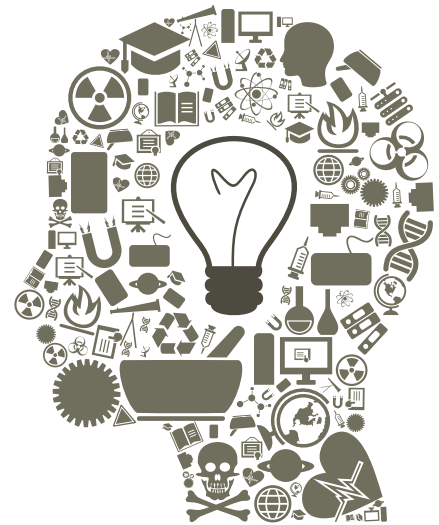
Register @
www.Region10.org/fostercare

When:
Thursday, February 27, 2014
9:00 AM - 12:00 PM

Where:
Timberlawn Mental Health System
4600 Samuell Blvd.
Dallas, TX 75228

 **REGION 10**
EDUCATION SERVICE CENTER
experience the Power of 10

Foster Care and the Adolescent Brain



When:

Thursday, February 27, 2014
9:00 AM – 12:00 PM

Where:

Timberlawn Mental Health System
4600 Samuell Blvd.
Dallas, TX 75228
972-978-1908 (Please call for directions)



| | | |
|--|---|----------------------|
| Toni Schweizer School/Foster Liaison | Introduction | 9:00 – 9:15 |
| Jessica Hooks, LCSW Program Director | Most Common Mental Health Issues with the Foster Care Population | 9:15 – 10:00 |
| Sid Kelt, MD Child Adolescent Psychiatrist | Psychotropic Medication Update Q &A | 10:00 – 10:45 |
| | BREAK | 10:45 – 11:00 |
| David Ray Region 10 ESC, Consultant | The Role of the Foster Care Liaison | 11:00 – 12:00 |



Register @
www.Region10.org/fostercare

