



# Head Start Principal & District Administrator Meeting

March 1, 2023

# Today's Agenda

- Welcome
- Reminders
- Program Updates
- Q&A





# General Updates





# Reminders & Updates



Campus Visits



Letters of  
Agreement



Active  
Supervision



23-24 Budget





# Health/Mental Health



# Health Updates



- Notify parents of immunizations, medical and dental exams 30 days prior to the due date.
- Reserve, schedule with screenings within 45 days of enrollment



- Assist with CPR training as assigned
- Send Nutrition Referral as needed
- HSAC April Mtg Preparation

# Mental Health Updates



## Monthly

- Mental Health referrals (Observe, give feedback, follow up)
- Site visits and check-ins with campus staff on existing or potential needs of students/families
- Attend campus team meetings as available
  - MH team collaborate to identify monthly topics for all schools to hear
- Check lesson plans for Head Start SEL component

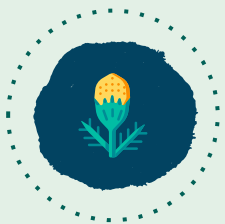


# P<sub>arent</sub>, F<sub>amily</sub>, and C<sub>ommunity</sub>, E<sub>ngagement</sub>

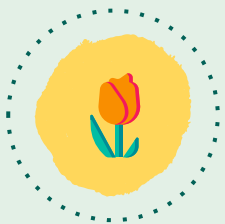




# PFCE Updates



- FRS PD day - 3.28.23 all day @Abrams
- Begin 3rd Goal Follow-up (March - May)
- Send 3rd Family Outcomes Survey to parents




- Continue sending home Ready Rosie invites, if applicable
- Send home 1 Ready Rosie video (FRS/Goal or Family Connection)



- Required 2nd Fatherhood Activity, if applicable (between January and April)
- Schedule onsite Parent Engagement Activity / Event for Ready Rosie



# P F C E

- **P** - Works with parents / caregivers to ensure their children are happy, safe, and healthy while at school. We promote working with both parents (if applicable)
  - **F** - Works to ensure families goals / needs / strengths / interests are being addressed
  - **C** - Works within our local and regional community resources, offering families the opportunity to gain access to such things as food, clothing, transportation, medical and dental services, utility and housing assistance, emergency/crisis support, adult education, and so much more!
  - **E** - Works to promote parent / family / fatherhood engagement opportunities that are offered in a wide variety of ways! Field trips, Campus In-Person events, Community wide events, Classroom Events, and Virtual events (if needed). These events focus on activities such as Nutrition, Mental Health, Financial Planning, Dental Health, Safety (child / family / home), and even Transitional events to help better prepare our families for their child's next educational step, JUST to name a few!
  -
- 



Education



# Education Updates



## CLASS

CLASS Window opens  
March 20th-March 31st



## 2nd Home Visits

2nd Home Visits should  
be completed before  
Spring Break.



## CDA

The CDA Credential is  
required for all IA's. We  
provide full tuition/books  
and support. We are in the  
process of registering for  
the Spring Semesters

Eligibility Recruitment Selection

Enrollment Attendance



# ERSEA updates

Recruitment flyers and yard signs will be going out soon.

What do you want your Head Start Program to look like next year?

- Regional Program Coordinators would like to chat with campus administrators to discuss the classroom configurations for next year.





# Inclusion Support



# Inclusion Updates

1o



HS/EHS Applications

Application review  
has begun for the  
23-24 school year

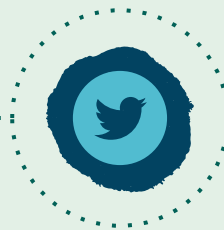
2o



Child Find Referrals

Submit Child Find  
referrals to districts

3o



HS/EHS Inclusion

Identify Inclusion  
returners for the  
23-24 school year

4o




HS/EHS Teacher PD

Planning summer  
PD for teachers



# Quality Assurance




Data & Ongoing Monitoring





# Annual Reporting Requirements

- Annual Report  
[2022 Annual Report](#)  
[Annual Report Requirements from Head Start Act.png](#)
  - Community Assessment  
[Community Assessment: The Foundation for Program Planning in Head Start | ECLKC](#)
  - Program Information Report (PIR)  
[Program Information Report \(PIR\) | ECLKC](#)  
[Head Start PIR 21-22](#)  
[Early Head Start PIR 21-22](#)
  - Home Based Program Curriculum Partner PIR  
[PAT PIR](#)
- 

Questions? Concerns?  
Comments? Wonderings?



# Your Head Start Team



**Kelly Skwarek**  
Director

[kelly.skwarek@region10.org](mailto:kelly.skwarek@region10.org)



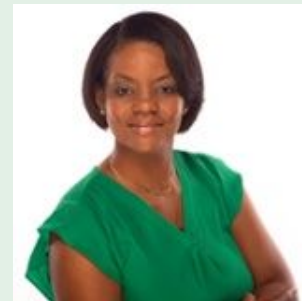
**Shay Dash**  
Assistant Director

[shavannia.dash@region10.org](mailto:shavannia.dash@region10.org)



**Alana Parsons**  
Quality Assurance

[alana.parsons@region10.org](mailto:alana.parsons@region10.org)



**Nikia Smith**  
ERSEA

[nikia.smith@region10.org](mailto:nikia.smith@region10.org)



**Rebecca Lara**  
Health/Mental Health/PFCE

[rebecca.lara@region10.org](mailto:rebecca.lara@region10.org)



**Tamika Dean**  
Education

[tamika.dean@region10.org](mailto:tamika.dean@region10.org)



**Carmen Harris**  
Inclusion

[carmen.harris@region10.org](mailto:carmen.harris@region10.org)