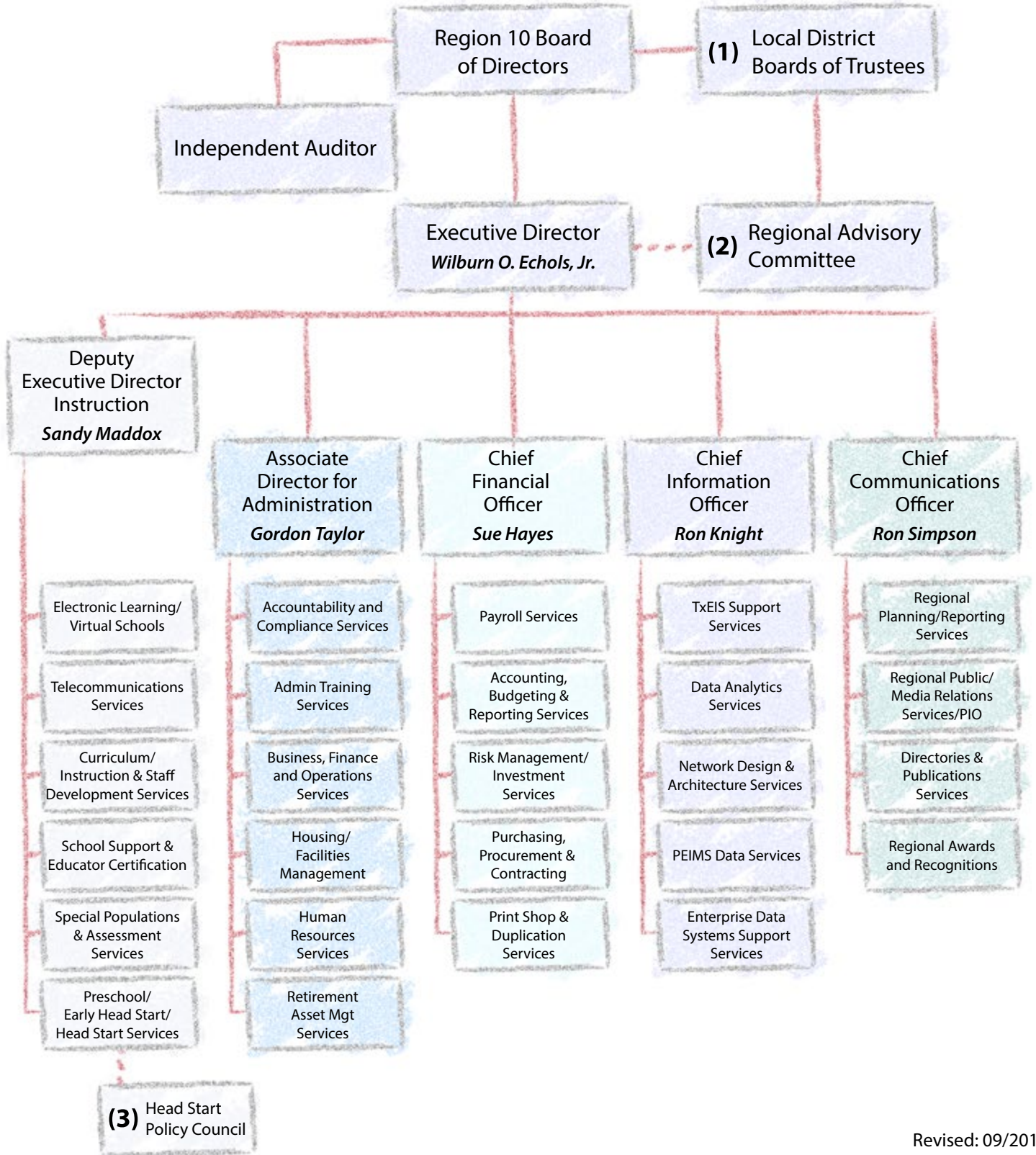


*Embrace technology;  
Immerse thinking in learning.  
Kindle the desire and provide the freedom  
where each student can  
imagine,  
create,  
and  
grow.*

*2012 - 2013*

*Division of Instruction  
Programs and Staff*

# Region 10 Education Service Center Organizational Chart



Revised: 09/2012

- (1) Members of local boards of trustees elect Region 10 Board of Directors, approve district participation in programs, and advise the regional board regarding effectiveness of center management and services.
- (2) Each local board of trustees appoints a representative to the Regional Advisory Committee, i.e., the Superintendent.
- (3) The Head Start Policy Council provides input to the Head Start Program, which in turn is communicated to the Board of Directors.

**Director Instruction**  
**Jan Moberley**  
**348-1426**

Program Coordinator  
 Student Support Services  
**Linda Tinsley**  
**348-1380**

Program Coordinator  
 State/Federal Initiatives  
**Vacant**  
**348-1710**

Program Coordinator  
 BE/ESL/Dual Language/  
 Migrant/Immigrant Programs  
**Ramona Aguilar**  
**348-1544**

Program Coordinator  
 Content Area Services  
**Dana Kelley Grieb**  
**348-1148**

Program Coordinator  
 Literacy Services  
**Jayne Knighton**  
**348-1444**

Program Coordinator  
 Curriculum and  
 Assessment Services  
**John L. David \***  
**348-1522**

**Career & Technology Education**  
 Kay Irlas - 348-1334  
*Staff development/technical assistance for career and technical education and PBMAS services*

**Counselor Initiative and Student Support (CISS)**

**Counselor Support**  
 Kim Simmons - 348-1528  
*Training and technical assistance for school counselors and college readiness*

**Discipline and PBM Data Validation**  
 Kim Simmons - 348-1528  
*Training and technical support for disciplinary actions and PBM*

**Safe/Drug Free Schools**  
 Victor Cheatham - 348-1022  
*Staff development/technical assistance in drug and violence-prevention education including bully prevention and suicide awareness*

**School Health Services**  
 Ashley Gilliam - 348-1474  
*Training and technical assistance for Coordinated School Health including School Health Advisory Councils (SHAC) and school nurse services*

**School Safety**  
 Kay Irlas - 348-1334  
*Staff development, district-safe school surveys and technical assistance*

**Technology Integration**  
 Sharon Henley - 348-1464  
*Training for the integration of technology and content, working with both students and teachers; offered under Title II cooperative*

**Advanced Academics**  
 Diane Wilcox - 348-1514  
*Training and technical support in GT, AP, IB, Pre-AP, and Dual Credit*

**AYP and State Accountability**  
 Jana Schreiner - 348-1480  
*Training/consultations for federal and state accountability*

**Fine Arts and Foreign Language**  
 Diane Wilcox - 348-1514  
*Training and conferences for teachers*

**Highly Qualified**  
 Cathy Gray - 348-1438  
*Technical assistance/compliance support for federal requirements*

**Parent and Community Involvement**  
 Jasmin Guzman - 348-1396  
*Training/support for parent/community involvement*

**Private/Non-Profit School Services**  
 Toni Garrett - 348-1488  
*Support and services for private non-profit schools*

**School Turnaround**  
 Natosha Scott - 348-1398  
*Support to low-performing schools*

**STAAR Coordination and Direct Student Testing**  
 Jana Schreiner - 348-1480  
*Training/consultations for state assessment program; direct student testing*

**Title I**  
 Cathy Gray - 348-1438  
*Technical assistance and compliance support for Title I schools*

**Administration/Campus Leadership BE/ESL Programs**  
 Ramona Aguilar - 348-1544  
*Training and support for campus principals*

**BE/ESL State & Title III Federal Compliance**  
 Myra Scrobeck - 348-1340  
*LPAC, TELPAS, PBM, state assessment training and consultations*

**BE/ESL Title III Service Cooperative**  
 Ramona Aguilar - 348-1544  
*Technical assistance and training in area of BE/ESL/Dual Language for member districts*

**BE and ESL TExES Preparation**  
 Ramona Aguilar - 348-1544  
*Professional development training and technical assistance*

**Bilingual Instruction and Program Design**  
 Ramona Aguilar - 348-1544  
*Professional development training and technical assistance*

**Dual Language Programs**  
**Elementary**  
 Ramona Aguilar - 348-1544  
**Secondary**  
 Alejandra Ortiz - 348-1500  
*Training and technical assistance*

**ESL Instruction/ELPS/SIOP K-12**  
 Dawn Osborne - 348-1468  
*Training and consultation*

**Immigrant Programs**  
 Ramona Aguilar - 348-1544  
*Design and event planning*

**Migrant Education**  
**Identification/Recruitment** 348-1710  
**Compliance and Student Support**  
 Myra Scrobeck - 348-1340  
**Student Academic Support**  
 Alejandra Ortiz - 348-1500  
**NGS - Esther Carrillo** - 348-1518

**Parent & Community Engagement for ELL & Immigrant Families**  
 Alejandra Ortiz - 348-1500

**Curriculum Directors' Service**  
 Jan Moberley - 348-1426  
*Informational sessions, listserv, and an online community for designated district curriculum directors*

**Curriculum Leadership Initiative**  
 Jan Moberley - 348-1426  
*Institute, study groups, and an online community for developing curriculum leaders, facilitators and coordinators*

**Performance-Based Monitoring**  
 Jan Moberley - 348-1426  
*Overall contact for district level TEA monitoring*

**School Improvement Tools**  
 Jan Moberley - 348-1426  
*Access to online tools developed for school turnaround*

**STAAR Overall Program Support**  
 Jan Moberley - 348-1426  
*Training and consultations related to transition to STAAR and STAAR EOC*

**VIP Principal Service**  
 Megan Timme - 348-1530  
*Service for developing principal capacity to create and monitor curriculum and compliant programs at the campus level*

**21st Authentic Learning Initiative**  
 Megan Timme - 348-1530  
*Transformational teachers' cooperative training in authentic learning and assessment*

**Content Area Services**

**Mathematics**  
**Elementary**  
 Carrie Saunders - 348-1402  
**Middle School**  
 Debbie Dethrage - 348-1368  
**High School**  
 Beth Loughry - 348-1392  
**School Improvement**  
 Melissa Bennett - 348-1450  
 Bianca Coker - 348-1482  
*Staff development/consultations for districts*

**Science**  
 Doni Cash - 348-1352  
 Amber Jones - 348-1512  
*Staff development/technical assistance for districts*

**Social Studies**  
 Laura Jablinski - 348-1342  
*Staff development/technical assistance for districts*

**General Content Areas & Statewide Professional Development**  
 Dana Grieb - 348-1148  
*Summer and EOC Academies for designated teachers*

**Reading/Language Arts**  
 Robyn Fox - 348-1484  
 Nancy McGruder - 348-1404  
 Kay Shurtleff - 348-1756  
 Joan Vaughan - 348-1520  
*Staff development/consultations for districts*

**Dyslexia**  
 Gina Mitchell - 348-1454  
*Staff development and 800 Texas Dyslexia Hotline support*

**English I, II, and III End-of-Course Training**  
 Kay Shurtleff - 348-1756  
*Staff development/consultations in preparation for the new English I, II, and III EOC assessments*

**Library Services Cooperative**  
 Terry Roper - 348-1414  
*Staff development/consultations for districts in the Library Services Cooperative*

**State Mandated Reading Assessment**  
 Nancy McGruder - 348-1404  
*Staff development/consultations in required reading instruments*

**Texas Adolescent Literacy Academies (TALA)**  
 Jayne Knighton - 348-1444  
*Statewide training for middle school teachers*

**Texas Literacy Initiative (TLI) and Literacy Coaching**  
 Robyn Fox - 348-1484  
*Staff development/consultations in literacy planning and coaching*

**Assessment Design and Audit \***  
 John David - 348-1522  
*Training and assistance on the development of quality assessments and assessment audits*

**CSCOPE Training and Support \***  
 Karen Najera - 348-1298  
*Implementation support*

**CSCOPE by Subject Area \* BE/Dual Languages \***  
 Lee Ann Valerio - 348-1050  
**ELA \***  
 Richard James - 348-1084  
**Math \***  
 Sabrina McCullough - 348-1716  
**Science \***  
 Michael Milburn - 348-1632  
**Social Studies \***  
 Bill Shuttlesworth - 348-1080  
*Training and support for implementation in given subject areas*

**eduphoria! Suite \***  
 Jim Newhouse - 348-1088  
*Program support*

**eduphoria! Help Desk \*** 348-1774

**General Curriculum Development \***  
 John David - 348-1522  
*Training on curriculum and assessment related issues and processes*

**WebCCAT and eduphoria! Training\***  
 Evelyn Van Antwerp - 348-1406  
*Internet-based comprehensive assessment tool for TEKS; training and demonstrations; support*

All phone numbers are in the 972 area code.

All phone numbers are in the 972 area code.

\* Housed at Abrams Site

Assistant Director  
Telecommunications

**Gary Bowers**  
**348-1336**

**ePlan, STaR Chart, and E-rate**

Gary Bowers - 348-1336

*Training and assistance with ePlan, STaR Chart,  
and E-rate programs*

**Help Desk for Region 10 348-1234**

**Web-Based Programs &  
Technology Applications**

*First line of support for all Region 10 web-based  
programs and technology applications*

**Network Services**

Gary Bowers - 348-1336

*Assistance with Region 10 data and  
videoconference network services*

**TETN**

Gary Bowers - 348-1336

Wayne Green - 348-1496

*Statewide videoconference network serving  
K-12 education, the ESCs and TEA*

**Videoconference Network**

Bob Barnes - 348-1610

*Videoconferencing and managed services*

**Wireless Internet Consortium**

Gary Bowers - 348-1336

*Provide member districts with broadband  
Internet service*

Assistant Director  
Special Populations  
**Gloria Key**  
348-1536

Program Coordinator  
Support Services \*  
**Pamela Baker**  
348-1654

Program Coordinator  
Direct Services \*  
**Kitra Gray**  
348-1580

**Administration/ Accountability for Special Education \***

Rosemary Manges - 348-1770  
*Leadership in the areas of federal, state, and local laws, rules, policies and procedures; monitoring preparation*

**Assistive Technology/Low Incidence Disabilities \***

Gayle McNurlen - 348-1598  
*Staff development and technical assistance for incorporating assistive technology and for the education of students who are medically fragile and/or severely/profoundly disabled*

**Auditory Impairment (Region 10) \***

Layne Pethick - 348-1588  
*Region 10 first point of contact regarding services for the auditory impaired*

**Autism \***

Layne Pethick - 348-1588  
*Staff development and technical assistance for the education of students who have autism*

**Charter School/Special Education Administration \***

Karen Slaughter - 348-1690  
*Staff development and technical assistance for charter school personnel*

**Child Find/Evaluation \***

Kay Torchiana - 348-1784  
*Staff development and technical assistance in special education evaluations and Child Find obligations*

**Multicultural/Disproportionality/Intergency Coordination \***

Amy Pool - 348-1684  
*Staff development and technical assistance for addressing the needs of diverse learners, disproportionality and community-based assistance*

**Parent Coordination/Mental Health\***

Rosario Samandi - 348-1674  
*First point of contact for parent assistance and staff development in the areas of parent involvement and mental health*

**Secondary Transition/VAC/Paraprofessionals \***

Cindy Pierce - 348-1436  
*Staff development and technical assistance in transition/VAC/special education paraprofessionals*

**Access to the General Curriculum/ Assessment Program for Special Education**

Allison Wilson - 348-1754  
Dixie Beck - 348-1592  
*Staff development and technical assistance in accessing the curriculum, use of accommodations and modifications, issues related to inclusion, and the statewide assessment program*

**Data Analysis**

Anna Griffiths - 348-1360  
*Technical assistance in the area of data analysis related to state and federal accountability for special education*

**Homeless Education**

David Ray - 348-1786  
*Leadership in homeless education and oversight of LEA programs supported through granted federal funds*

**Legal Framework**

Gloria Key - 348-1536  
*Staff development and technical assistance*

**Positive Behavioral Interventions and Supports/Texas Behavior Support Initiative**

Robbie Rowan - 348-1550  
Shannon Urbina - 348-1582  
*Staff development and technical assistance in discipline and behavior management of students with disabilities*

**Speech Pathology \***

Jyutika Mehta - 348-1548  
*Staff development and technical assistance in the area of speech-language pathology*

**TETN/TWU Masters Degree Program - Speech Pathology \***

Karyn Kilroy - 348-1572  
*Statewide leadership and coordination for the graduate program in speech-language pathology*

**Adapted Physical Education \***

Randy Foederer - 348-1570  
Jennifer Doyle - 348-1560  
*Adapted physical education services, staff development, technical assistance, and mentoring*

**OT and PT Services \***

Lois Goodin - 348-1646  
Jacintha Griffith - 348-1460  
*Occupational and physical therapy services, staff development, technical assistance, and mentoring*

**Supplementary Services for the Visually Impaired \***

Christy Householter - 348-1634  
Susan Lawrence - 348-1590  
Belinda Rudinger - 348-1606  
*Staff development, technical assistance, and evaluation for adaptive devices*

**Technical Assistance for Deafblind Students \***

Susan Lawrence - 348-1590  
*Technical assistance and staff development for LEAs/SSAs and families affected by deafblindness*

\* Housed at Abrams Site

All phone numbers are in the 972 area code.

Director  
 Preschool Services \*  
**LeAnn Kite Hampton**  
**348-1600**

Program Coordinator  
 Head Start \*  
 McKinney ISD, Wylie ISD  
**Ernestine Townsend**  
**348-1668**

Program Coordinator  
 Head Start \*  
 Denison ISD, Frisco ISD,  
 Sherman ISD, PPCD  
**Sandy Axelrod 348-1354**

Program Coordinator  
 Head Start \*  
 Kaufman County,  
 Pottsboro ISD, Whitesboro ISD  
**Cindy Griffith 348-1752**

Program Coordinator  
 Head Start \*  
 Allen ISD, Farmersville ISD,  
 Rockwall County  
**Colleen Hines 348-1614**

**Community Partnerships \***  
 Ernestine Townsend - 348-1668  
*Ensuring that Head Start and Early Head Start actively seek partnerships with agencies in the community*

**Eligibility and Recruitment \***  
 Ernestine Townsend - 348-1668  
*Enrollment and registration of eligible Head Start and Early Head Start children*

**Family Involvement \***  
 Liz Haywood - 348-1584  
 Denise Roach - 348-1688  
 Ernestine Townsend - 348-1668  
*Family involvement through family activities, participation at scheduled campus meetings, and volunteering on regional committees*

**Family Literacy \***  
 Liz Haywood - 348-1584  
 Denise Roach - 348-1688  
*Assistance with ways of enriching family literacy and parenting skills*

**Family Partnerships \***  
 Liz Haywood - 348-1584  
 Denise Roach - 348-1688  
*Partnership building with Head Start families to identify goals, strengths, and services*

**Transition \***  
 Denise Roach - 348-1688  
*Coordination with parents, schools and other agencies to ensure smooth transitions*

**Early Childhood Intervention \***  
 Gay Lee Schumann - 348-1664  
 Kelley Estes-Jones - 348-1780  
*Interagency collaboration with agencies providing services for children with disabilities, birth to third birthday*

**Head Start Disabilities Services \***  
 Janis Matthys - 348-1608  
 Dawn Lisenby - 348-1776  
*Liaison between Region 10 ESC Head Start program and LEA Special Education program*

**Preschool Program for Children with Disabilities (PPCD) \***  
 Gay Lee Schumann - 348-1664  
 Kelley Estes-Jones - 348-1780  
*Staff development and technical assistance for services for preschool children with disabilities*

**Early Childhood Education \***  
 Cindy Daniels - 348-1782  
 Tamika Dean - 348-1332  
 Connie Barnes - 348-1096  
 Mary Ann Dudko - 348-1790  
*Staff development, support for Head Start teachers, and technical assistance related to Head Start classrooms*

**Child Health Services \***  
 Colleen Hines - 348-1614  
*Establishing medical services training in health and safety, and tracking of children's medical and dental services*

**Nutrition \***  
 Colleen Hines - 348-1614  
*Nutrition consultations with teachers, parents, and food services directors*

Program Coordinators  
 Early Head Start \*  
**Myrna Calvert**  
**348-1660**  
**Susan Casone**  
**348-1622**  
*Services for income-eligible pregnant women, infants and toddlers*  
*Eligible locations are McKinney, Rockwall, and Sherman*

Program Coordinator  
 Preschool Budgets  
 Head Start \*  
 Ellis County  
**Kelly Young**  
**348-1106**  
*Budget assistance to districts on funding application and reporting for Preschool Services projects*

**Mental Health \***  
 Rebecca Lara - 348-1778  
*Assistance with Head Start/Early Head Start children on issues related to mental health*

**Pre-Kindergarten School Readiness Integration \***  
 Ginger Williford - 348-1596  
*Staff development and technical assistance with Pre-K, child care and Head Start*

\* Housed at Abrams Site

All phone numbers are in the 972 area code.

Assistant Director  
School Support and Educator Certification  
**Chris Kanouse**  
348-1680

Program Coordinator  
Certification  
**Susie West**  
348-1692

#### College and Career Readiness

Chris Kanouse - 348-1680  
Linda Tinsley - 348-1380  
*Professional development, resources and technical assistance*

#### Paraprofessional Training

Chris Kanouse - 348-1680  
*Professional development and technical assistance*

#### Reading Recovery

Chris Kanouse - 348-1680  
*Training and support for districts in program*

#### TxBESS Mentor Training

Chris Kanouse - 348-1680  
*Mentor and administrator training to expand support for beginning teachers*

#### Use of Instructional Materials Allotment (IMA) HB6

Chris Kanouse - 348-1680  
*Support, training and assistance in understanding acquisition of instructional materials, textbooks, technological equipment and technology related services through IMA, including materials preview and use of EMAT online ordering system*

#### Child Nutrition \*

Evelyn Hawkins - 348-1386  
Aubla Clay - 348-1714  
Genny D'Souza - 348-1388  
*Technical assistance and training for effective management of the National School Lunch and Breakfast Program*

#### Child Nutrition Cooperative \*

Randy Lewis - 348-1448  
*Establishment and management of contracts pertaining to the purchase of food and non-food supplies by member districts*

#### Military Child Education Coalition

Chris Kanouse - 348-1680  
*Addressing educational needs of children in military families*

#### Performance-Based Academic Coaching Team (PACT) System for Novice Teacher Support

Chris Kanouse - 348-1680  
*Technical assistance, dissemination of information, and access to both online and face-to-face (no cost) professional development for novice teachers, mentors, and campus administrators*

#### School Bus Driver Training

Chris Kanouse - 348-1680  
*State-mandated 20 hour certification training and 8 hour recertification training for school bus drivers*

#### Bilingual/ESL and Generalist EC-6/4-8 and ESL All Levels

Amenia Munn - 348-1720  
*Technical assistance regarding specific teacher certification requirements*

#### Educational Diagnosticians and School Counselors

Barb Keefer - 348-1478  
*Technical assistance regarding educational diagnostician and school counselor certification requirements*

#### Middle School and Secondary 4-12 Content Areas

Ramona Oats - 348-1532  
Amenia Munn - 348-1720  
*Technical assistance regarding specific teacher certification requirements*

#### Special Education - All Levels

Barb Keefer - 348-1478  
*Technical assistance regarding specific teacher certification requirements*

#### Substitute Teacher Training

Amenia Munn - 348-1720  
*Training focused on knowledge/skills/activities to enhance the quality of instruction in the absence of the classroom teacher*

#### TExES Study Sessions

Ramona Oats - 348-1532  
*Study reviews and practice tests for TExES exams available for the general public*

\* Housed at Abrams Site

All phone numbers are in the 972 area code.

Director  
Instructional Finance,  
21st Century Learning, & Abrams Facility  
**Craig Gray - 348-1376**

Program Coordinator  
Federal Funding and  
Program Finance  
**Jeanine Alpert**  
348-1452

Executive Director  
Texas Virtual School  
Network (TxVSN) \*  
**Barbara Smith**  
348-1440

**Federal Cooperative Funding and Compliance**  
Jeanine Alpert - 348-1452  
*Management of district members' cooperative funds*

**Private/Non-Profit and Title I Funding and Compliance**  
Jo Dell Bland - 348-1358  
*Assistance to local personnel in regulations*

**Region 10 Website**  
Denise Barker - 348-1516  
*Development and maintenance of Region 10 website*

**Technology Applications Professional Development**  
Lori Aden - 348-1510  
Kasey Bell - 348-1322  
*Development and facilitation of statewide professional development courses in Project Share*

**TxVSN Counselor \***  
Laura Hodges - 348-1416  
*Access to TxVSN electronic courses and counselor support*

**TxVSN Help Desk 1-866-938-9876**  
*Overall user assistance*

**TxVSN Professional Development and Communications \***  
Connie Swiderski - 348-1094  
*Training on use of courses and system*

Instructional Coordinator  
**Michael Moline**  
348-1430

**Interactive White Board and Mobile Device Integration**  
Denise Kanaman - 348-1328  
Mike Moline - 348-1430  
*Training and demonstrations on the incorporation of smart phones, tablets, and interactive whiteboards into the learning process*

**Online Professional Development**  
Denise Kanaman - 348-1328  
*Self-paced, 24-7 professional development addressing compliance issues, pedagogy, and content areas*

**Project Share**  
Mike Moline - 348-1430  
Kasey Bell - 348-1322  
*User training and administrative support; Collaborative Learning Communities*

**TxAIR/MSTAR Universal Screener**  
Denise Kanaman - 348-1328  
*Utilization of the state-provided diagnostic tools*

**The Future is Now Classroom**  
Mike Moline - 348-1430  
*Professional development and on-site support for teachers and students participating in The Future is Now Classroom project*

**Technology Coordinators Roundtable \***  
Craig Gray - 348-1376  
*Quarterly meetings for updates and state information*

**Technology Lending Program Grant \***  
Craig Gray - 348-1376  
*Administration of statewide technology lending program on behalf of TEA*

**Technology Planning Conference \***  
Craig Gray - 348-1376  
*Annual conference featuring a keynote speaker and presentation of successful district programs*

Production Manager  
Digital Media Resources  
**Mark McGahan**  
348-1636

**Discovery Education Streaming**  
Denise Kanaman - 348-1328  
*Access to and training on the utilization of Discovery's streaming video resources*

**NovaNET™/GradPoint™**  
Denise Kanaman - 348-1328  
*Access to and training on Pearson's Legacy NovaNET™ and new GradPoint™ courseware*

**Region 10 YouTube Channel/iTunes U**  
Garry Yates - 348-1678  
*Student tutorials, SmartBytz, and additional regionally developed resources via the Region 10 channel on iTunes U*

**Video/Digital Media Production**  
Mark McGahan - 348-1636  
*Access to assistance in production of media including graphic design of creative print and digital materials for instruction, marketing, and communications*

**21st Learning Repository \***  
Craig Gray - 348-1376  
*Collection of videos and resources supporting authentic learning for the 21st Century*

\* Housed at Abrams Site

All phone numbers are in the 972 area code.



# Quick Staff Directory

2012-2013

Aden, Lori	348-1510	Griffiths, Anna	348-1360	Oats, Ramona	348-1532
Aguilar, Ramona	348-1544	Guzman, Jasmin	348-1396	Ortiz, Alejandra	348-1500
Alpert, Jeanine	348-1452	Hawkins, Evelyn	348-1386	Osborne, Dawn	348-1468
Axelrod, Sandy	348-1354	Haywood, Liz	348-1584	Pethick, Layne	348-1588
Baker, Pamela	348-1654	Henley, Sharon	348-1464	Pierce, Cindy	348-1436
Barker, Denise	348-1516	Hines, Colleen	348-1614	Pool, Amy	348-1684
Barnes, Bob	348-1610	Hodges, Laura	348-1416	Ray, David	348-1786
Barnes, Connie	348-1096	Householter, Christy	348-1634	Roach, Denise	348-1688
Beck, Dixie	348-1592	Irlas, Kay	348-1334	Roper, Terry	348-1414
Bell, Kasey	348-1322	Jablinski, Laura	348-1342	Rowan, Robbie	348-1550
Bennett, Melissa	348-1450	James, Richard	348-1084	Rudinger, Belinda	348-1606
Bland, Jo Dell	348-1358	Jones, Amber	348-1512	Samandi, Rosario	348-1674
Bowers, Gary	348-1336	Kanaman, Denise	348-1328	Saunders, Carrie	348-1402
Calvert, Myrna	348-1660	Kanouse, Chris	348-1680	Schreiner, Jana	348-1480
Carillo, Esther	348-1518	Keefer, Barb	348-1478	Schuman, Gay Lee	348-1664
Cash, Doni	348-1352	Kelley Grieb, Dana	348-1148	Scott, Natosha	348-1398
Casone, Susan	348-1622	Key, Gloria	348-1536	Scrabeck, Myra	348-1340
Cheatham, Victor	348-1022	Kilroy, Karyn	348-1572	Shurtleff, Kay	348-1756
Clay, Aubla	348-1714	Kite Hampton, LeAnn	348-1600	Shuttlesworth, Bill	348-1080
Coker, Bianca	348-1482	Knighton, Jayne	348-1444	Simmons, Kim	348-1528
Daniels, Cindy	348-1782	Lara, Rebecca	348-1778	Slaughter, Karen	348-1690
David, John	348-1522	Lawrence, Susan	348-1590	Smith, Barb	348-1440
Dean, Tamika	348-1332	Lewis, Randy	348-1448	Swiderski, Connie	348-1094
Dethrage, Debbie	348-1368	Lisenby, Dawn	348-1776	Timme, Megan	348-1530
Doyle, Jennifer	348-1560	Loughry, Beth	348-1392	Tinsley, Linda	348-1380
D'Souza, Genny	348-1388	Manges, Rosemary	348-1770	Torchiana, Kay	348-1784
Dudko, Mary Ann	348-1790	Mathys, Janis	348-1608	Townsend, Ernestine	348-1668
Estes-Jones, Kelley	348-1780	McCullough, Sabrina	348-1716	Urbina, Shannon	348-1582
Foederer, Randy	348-1570	McGahan, Mark	348-1636	Valerio, Lee Ann	348-1050
Fox, Robyn	348-1484	McGruder, Nancy	348-1404	Van Antwerp, Evelyn	348-1406
Garrett, Toni	348-1488	McNurlen, Gayle	348-1598	Vaughan, Joan	348-1520
Gilliam, Ashley	348-1474	Mehta, Jyutika	348-1548	West, Susie	348-1692
Goodin, Lois	348-1646	Milburn, Michael	348-1632	Wilcox, Diane	348-1514
Gray, Cathy	348-1438	Mitchell, Gina	348-1454	Williford, Ginger	348-1596
Gray, Craig	348-1376	Moberley, Jan	348-1426	Wilson, Allison	348-1754
Gray, Kitra	348-1580	Moline, Mike	348-1430	Yates, Garry	348-1678
Green, Wayne	348-1496	Munn, Amenia	348-1720	Young, Kelly	348-1106
Griffith, Cindy	348-1752	Najera, Karen	348-1298		
Griffith, Jacintha	348-1460	Newhouse, Jim	348-1088		

All phone numbers are in the 972 area code.

# Quick Program Reference

**Help Desk for Region 10 Web-Based Programs & Technology Applications**

**972-348-1234**

Advanced Academics	972-348-1514	Library Services	972-348-1414
Adequate Yearly Progress	972-348-1480	Mathematics	972-348-1392
Aware	972-348-1088	Migrant	972-348-1710
Bilingual Education	972-348-1544	Online Learning Center	972-348-1678
Career/Technical	972-348-1334	Parent Involvement	972-348-1396
College & Career	972-348-1680	Paraprofessionals	972-348-1680
Counselors	972-348-1528	Professional Development	972-348-1426
Curriculum Assistance	972-348-1426	Project Share	972-348-1430
Discovery Education Streaming	972-348-1328	Reading	972-348-1484
Distance Learning	972-348-1610	Safe/Drug Free Schools	972-348-1022
Digital Media Resources	972-348-1028	Science	972-348-1352
Dyslexia	972-348-1454	Social Studies	972-348-1342
Early Head Start	972-348-1626	Special Education	972-348-1536
Educator Certification	972-348-1680	State Assessment Program	972-348-1480
E-rate	972-348-1336	TETN	972-348-1336
ESL	972-348-1544	TALA (Texas Adolescent Literacy Academies)	972-348-1444
Head Start, PPCD & Pre-K	972-348-1600	TEXES	972-348-1532
Health	972-348-1474	TxVSN	972-348-1440
Homeless Education	972-348-1536	Videoconferencing	972-348-1610
Language Arts	972-348-1444	WebCCAT/Curriculum Tool	972-348-1426

***The Division is serious about our service relationship with you. Should we fail to deliver quality service and respect, please call or email Dr. Sandy Maddox at***

***972-348-1008 or [sandy.maddox@region10.org](mailto:sandy.maddox@region10.org)***

## Division of Instruction Programs & Staff Chart 2012-2013

**Dr. Sandra Maddox, Deputy Executive Director**

**Wilburn O. Echols, Jr., Executive Director**

**Board of Directors:** Mack B. Pierson, Chairman, Steve Overton, Vice Chairman, Elvia Flores, Secretary, Charlotte Carter, David Foerch, Early B. Milstead, Charles Williams, Paul Case



It is the policy of Region 10 Education Service Center not to discriminate on the basis of race, color, national origin, gender or handicap in its vocational programs, services or activities as required by Title VI of the Civil Rights Act of 1964, as amended; Title IX of the Education Amendments of 1972; and Section 503 and 504 of the Rehabilitation Act of 1973, as amended. Region 10 Education Service Center will take steps to ensure that lack of English language skills will not be a barrier to admission and participation in all educational programs and services.