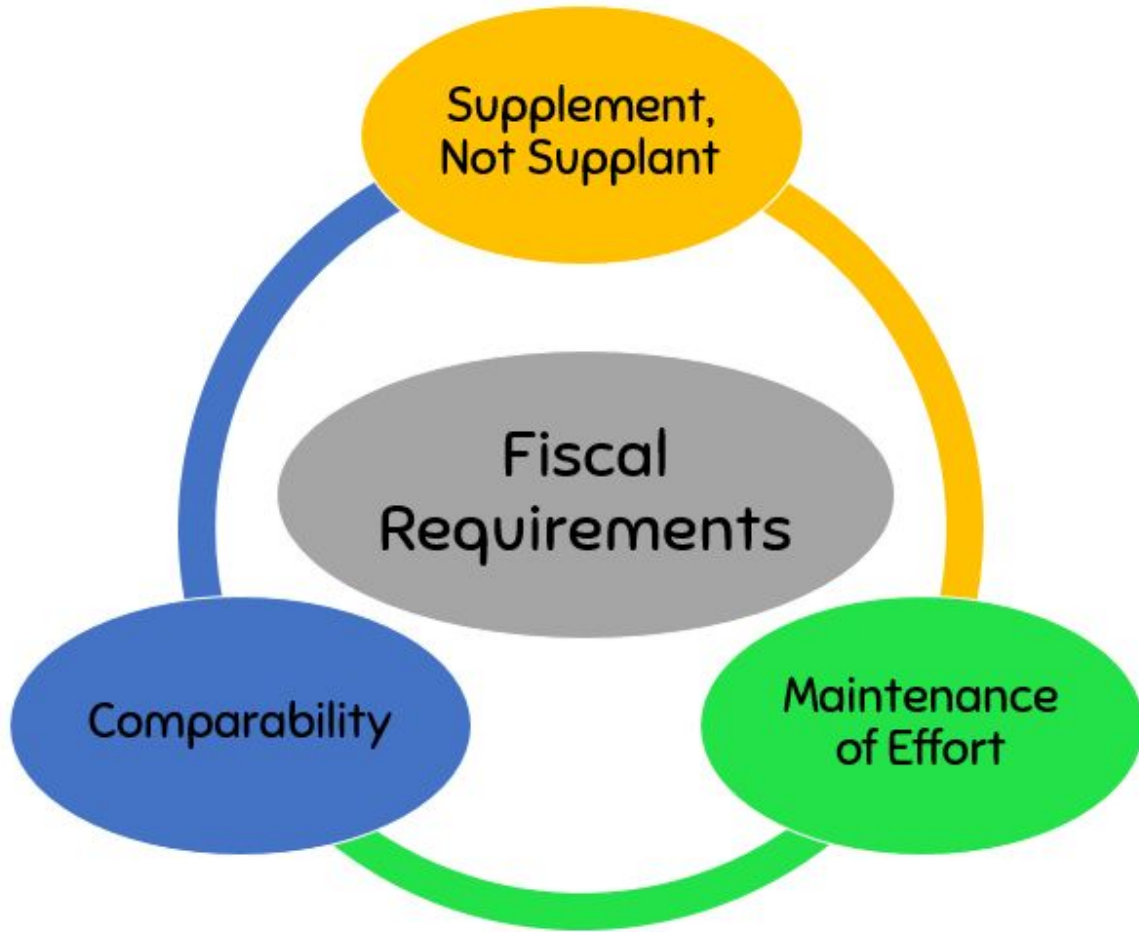


Supplement, Not Supplant

Title I, Part A



Supplement, Not Supplant

Supplement: something that completes or enhances something else when added to it.

Supplant: to take the place of and serve as a substitute for



Traditional Presumptions of Supplanting

Federal funds must supplement—add to, enhance, expand, increase, extend—the programs and services offered with state and local funds. Federal funds are not permitted to be used to supplant—take the place of, replace—the state and local funds used to offer those programs and services.

Three Presumptions of Supplanting:

1. Providing Services Required Under State or Local Law
2. Providing Same Services as Those Provided in Prior School Year with State or Local Funds
3. Providing the Same Services in Federal and Non-Federal Programs

Title I, Part A Statute PL 114-95



Sec. 1118(b)(1)

An LEA shall use Federal funds received under this part only to supplement the funds that would, in the absence of such Federal funds, be made available from State and local sources for the education of students participating in programs assisted under this part, and not to supplant such funds.

Title I, Part A Statute

Sec. 1118(b)(3) - Special Rule

No LEA shall be required to:

- Identify that an individual cost or service supported is supplemental or
- Provide services through a particular instructional method or setting to demonstrate compliance

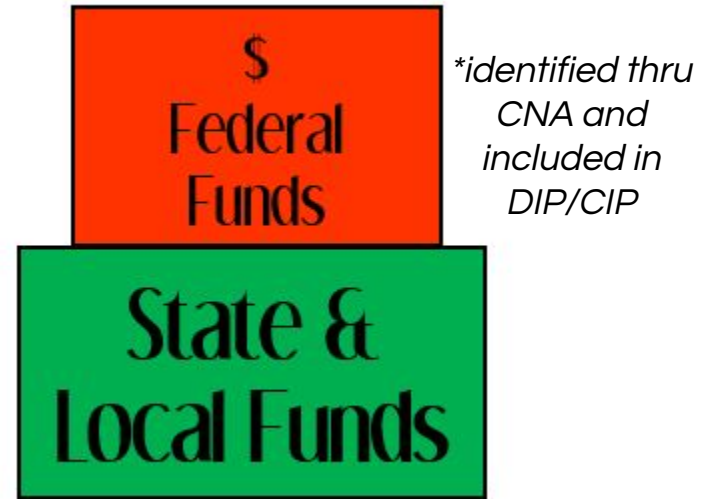


Supplement, Not Supplant

All Other ESSA Programs



Title I, Part A



Compliance



Sec 1118(b)(2) and Sec 1118(b)(5)

- LEAs must demonstrate methodology used to allocate State/Local funds is equitable
- Shall meet compliance no later than December 10, 2017 (2 years after ESSA was signed)

Methodology



News Bulletin

Department of Contracts, Grants and
Financial Administration

December 6, 2017

USDE Extension

USDE Provides Additional Time to Comply with New Title I, Part A Supplement, Not Supplant Requirement under ESSA

In a prior news bulletin issued on November 30, 2017, TEA reminded LEAs of the deadline set by USDE of December 10, 2017, to develop a supplement, not supplant methodology that complies with the requirement under 1118(b)(2) of ESSA.

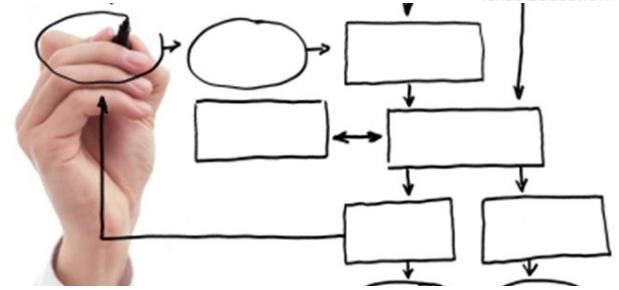
In order to ensure a smooth transition to the new law, USDE today provided additional time to meet the supplement, not supplant compliance requirement. **LEAs do not need to have their methodology in place by December 10, 2017.**

However, the **LEA must have a methodology in place for use in the 2018-2019 school year.**

Methodology

Sec 1118(b)(4) - Prohibition

Nothing in this section shall be construed to authorize or permit the Secretary to prescribe the specific methodology a local educational agency uses to allocate State and local funds to each school receiving assistance under this part.





For Additional Support:

Contact your local
Education Service Center.

Follow this link for the name of
your ESC Contacts.

<https://tea.texas.gov/regional-services/esc/>

Copyright 2018 © Notice. The materials are copyrighted © and trademarked ™ as the property of the Texas Education Agency (TEA) and may not be reproduced without the express written permission of TEA, except under the following conditions:

- 1) Texas public school districts, charter schools, and Education Service Centers may reproduce and use copies of the Materials and Related Materials for the districts' and schools' educational use without obtaining permission from TEA.
- 2) Residents of the state of Texas may reproduce and use copies of the Materials and Related Materials for individual personal use only without obtaining written permission of TEA.
- 3) Any portion reproduced must be reproduced in its entirety and remain unedited, unaltered and unchanged in any way.
- 4) No monetary charge can be made for the reproduced materials or any document containing them; however, a reasonable charge to cover only the cost of reproduction and distribution may be charged.

Private entities or persons located in Texas that are not Texas public school districts, Texas Education Service Centers, or Texas charter schools or any entity, whether public or private, educational or non-educational, located outside the state of Texas MUST obtain written approval from TEA and will be required to enter into a license agreement that may involve the payment of a licensing fee or a royalty.

For information contact: Texas Education Agency, 1701 N. Congress Ave., Austin, TX 78701-1494; email: copyrights@tea.state.tx.us.